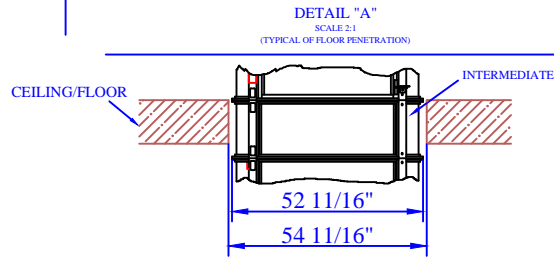
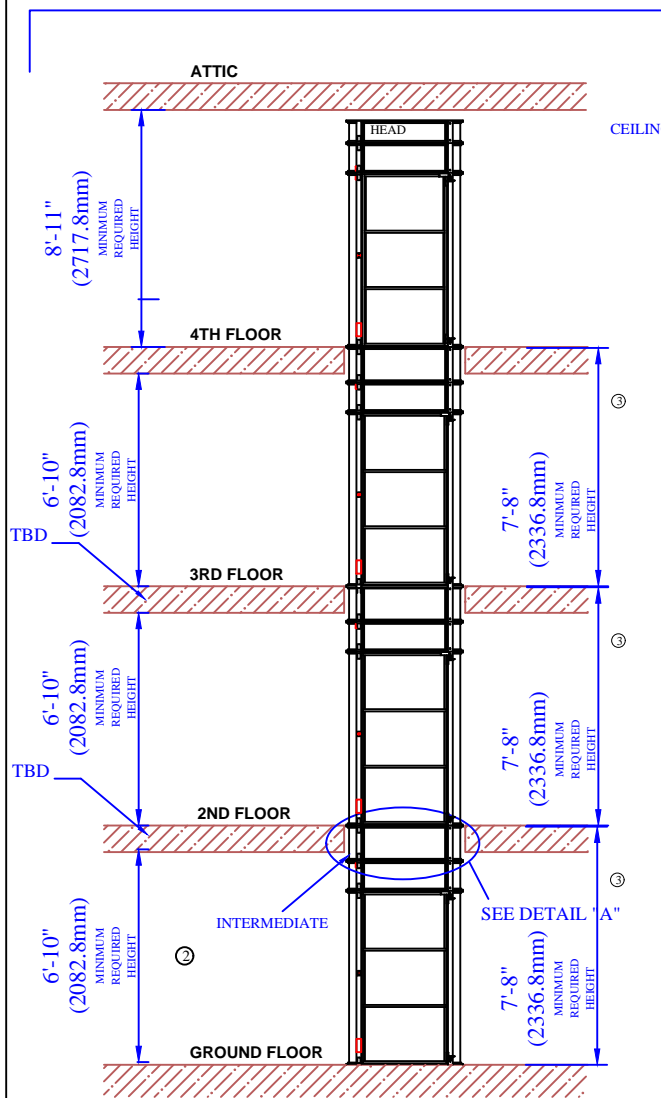
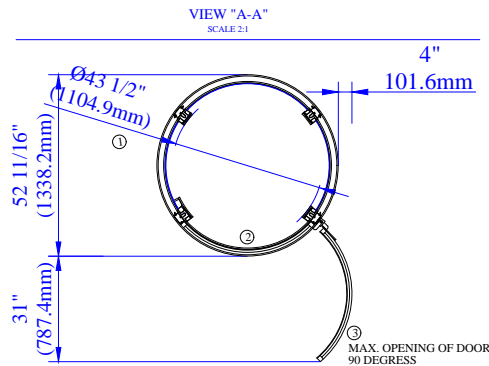


TYPICAL SETUP

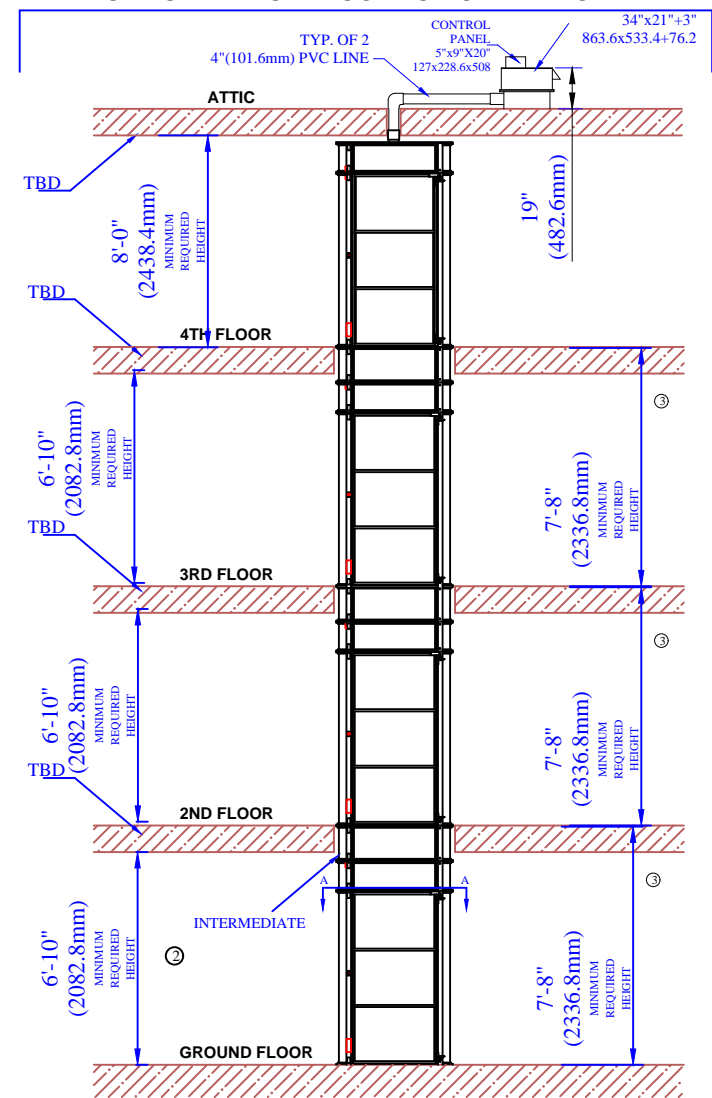


NOTE:

- INTERMEDIATE CYLINDER IS CUSTOM MADE AS FLOOR THICKNESS MAY VARY FROM HOME TO HOME.
- MINIMUM ALLOWABLE CEILING HEIGHT(S) IS 6'-10" FOR DOOR TO FULLY SWING OPEN
- MINIMUM FLOOR TO FLOOR HEIGHT REQUIRED IS 7'-8"
- INTERNAL DIAMETER OF CABIN WITHOUT THE COLUMNS IS 43 1/2" AND THE INTERNAL CABIN HEIGHT IS 6'-7"
- DOOR WIDTH IS 31"
- MAX. ELEVATOR HEIGHT IS 50' OF TOTAL TRAVEL



OPTION: REMOTE LOCATION OF HEAD UNIT



Information contained herein is the property of Pneumatic Vacuum Elevators LLC. No reproduction or disclosure of this information may be made by the recipient to any person or organization without the written consent of Pneumatic Vacuum Elevators LLC.

Item ref.	Quantity	Material	Dimensions	Article No./ Reference
<div> PNEUMATIC VACUUM ELEVATORS LLC </div>				
TYPICAL HOME INSTALLATION FOR A 4STOP ELEVATOR - MODEL UB52				
Designed by RL	Scale NTS	Drawing No. D-T52-H-04	Rev 0	Date 11/22/19