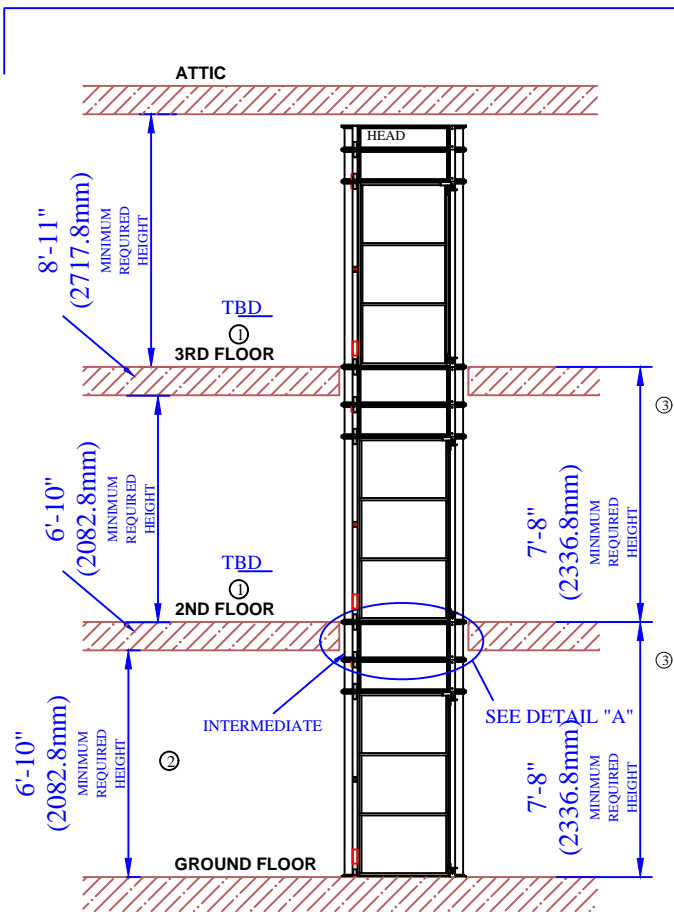
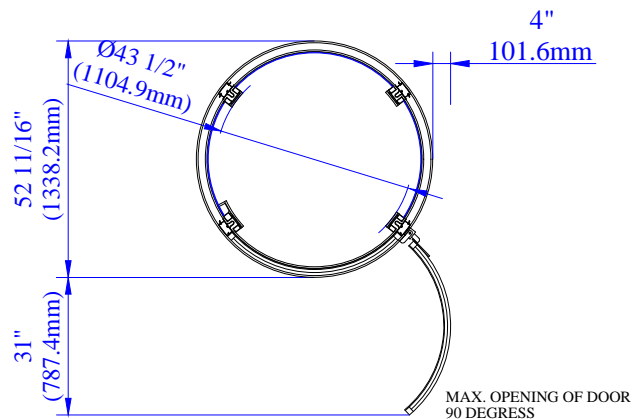


TYPICAL SETUP



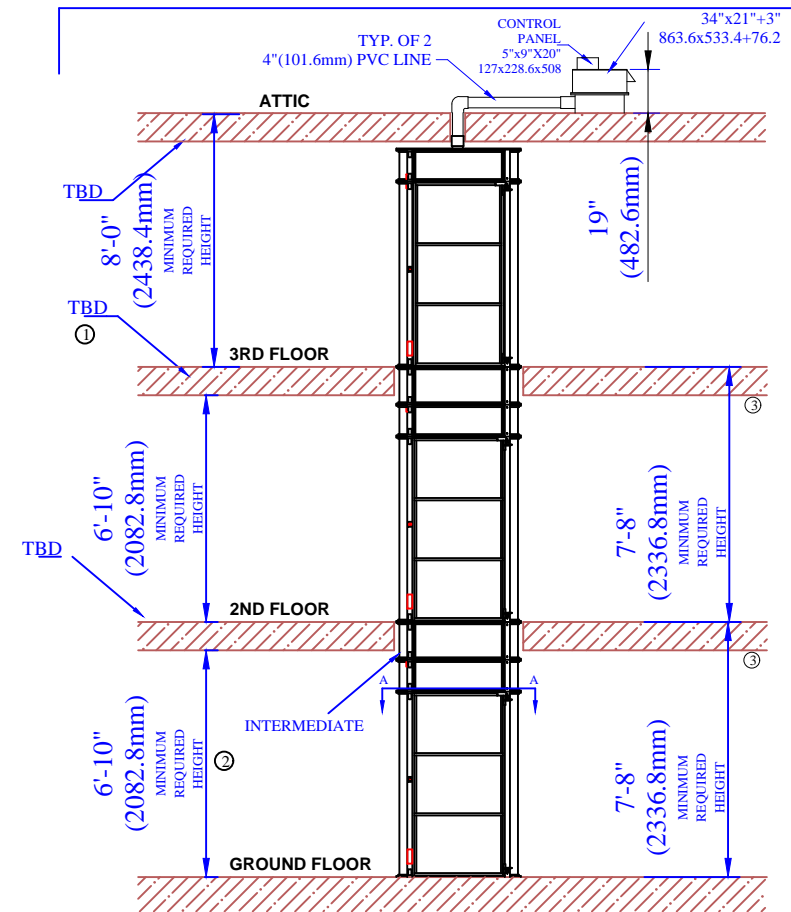
VIEW "A-A"
SCALE 2:1



NOTE:

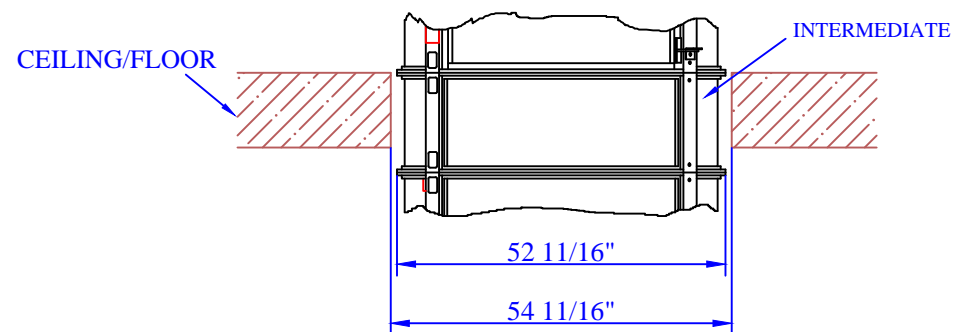
- ① INTERMEDIATE CYLINDER IS CUSTOM MADE AS FLOOR THICKNESS MAY VARY FROM HOME TO HOME.
- ② MINIMUM ALLOWABLE CEILING HEIGHT(S) IS 6'-10" FOR DOOR TO FULLY SWING OPEN
- ③ MINIMUM FLOOR TO FLOOR HEIGHT REQUIRED IS 7'-8"
- ④ INTERNAL DIAMETER OF CABIN WITHOUT THE COLUMNS IS 43 1/2" AND THE INTERNAL CABIN HEIGHT IS 6'-7"
- ⑤ DOOR WIDTH IS 31"
- ⑥ MAX. ELEVATOR HEIGHT IS 50' OF TOTAL TRAVEL

OPTION: REMOTE LOCATION OF HEAD UNIT




DETAIL "A"

SCALE 2:1
(TYPICAL OF FLOOR PENETRATION)



Information contained herein is the property of Pneumatic Vacuum Elevators LLC. No reproduction or disclosure of this information may be made by the recipient to any person or organization without the written consent of Pneumatic Vacuum Elevators LLC.

Itemref.	Quantity	Material	Dimentions			Article No./ Reference		
 PNEUMATIC VACUUM ELEVATORS LLC	TYPICAL HOME INSTALLATION FOR A 3STOP ELEVATOR - MODEL UB52							
	Designed by RL	Scale NTS	Drawing No. D-T52-H-03	Rev 1	Date 11/22/19			