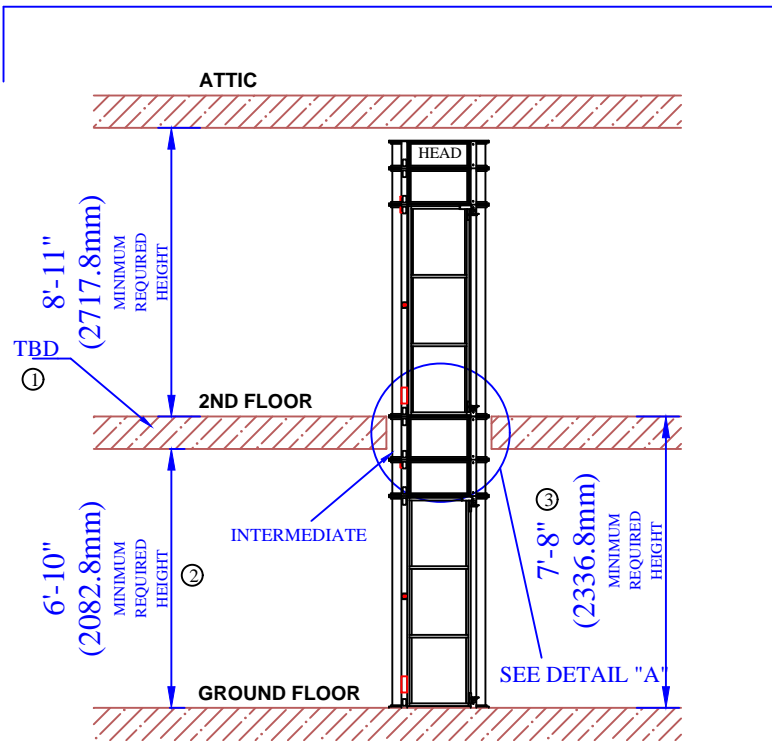
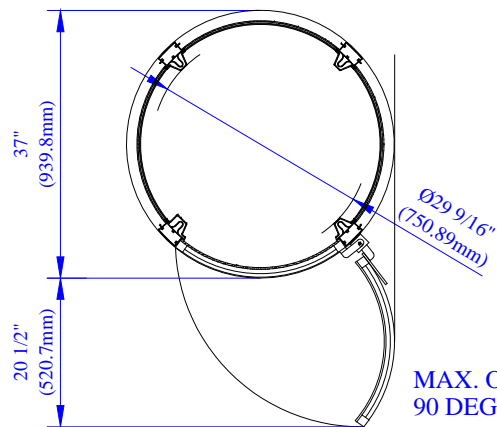


## TYPICAL SETUP



## VIEW "A-A"

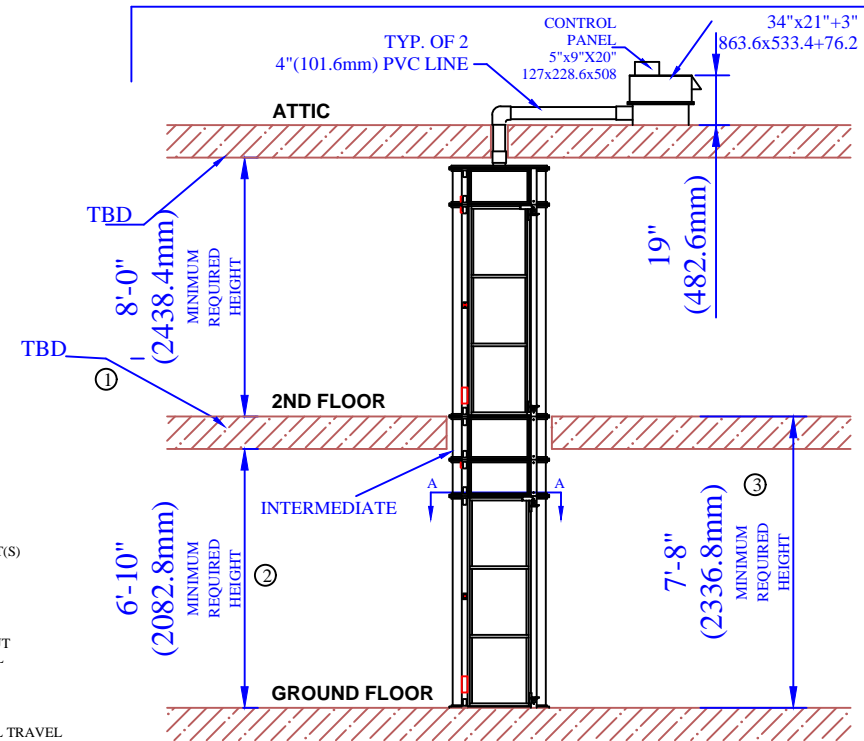
SCALE 2:1



MAX. OPENING OF DOOR  
90 DEGRESS

Information contained herein is the property of  
Pneumatic Vacuum Elevators LLC. No reproduction  
or disclosure of this information may be made by the  
recipient to any person or organization without the  
written consent of Pneumatic Vacuum Elevators LLC.

## OPTION: REMOTE LOCATION OF HEAD UNIT

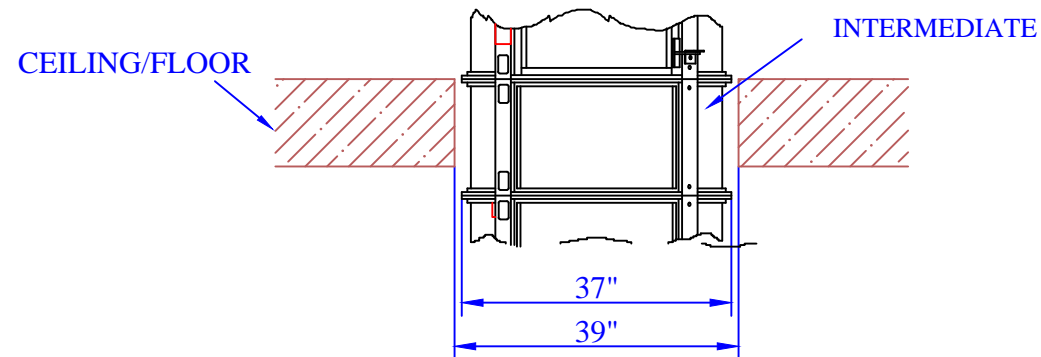



### NOTE:

- ① INTERMEDIATE CYLINDER IS CUSTOM MADE AS FLOOR THICKNESS MAY VARY FROM HOME TO HOME.
- ② MINIMUM ALLOWABLE CEILING HEIGHT(S) IS 6'-10" FOR DOOR TO FULLY SWING OPEN
- ③ MINIMUM FLOOR TO FLOOR HEIGHT REQUIRED IS 7'-8"
- ④ INTERNAL DIAMETER OF CABIN WITHOUT THE COLUMNS IS 32" AND THE INTERNAL CABIN HEIGHT IS 6'-7"
- ⑤ DOOR WIDTH IS 23 1/2"
- ⑥ MAX. ELEVATOR HEIGHT IS 50' OF TOTAL TRAVEL

## DETAIL "A"

SCALE 2:1  
(TYPICAL OF FLOOR PENETRATION)



| Itemref.  | Quantity | Material | Dimensions | Article No./ Reference                         |              |                           |          |
|---|----------|----------|------------|--|--------------|---------------------------|----------|
|  <b>PNEUMATIC VACUUM ELEVATORS LLC</b> |          |          |            | TYPICAL HOME INSTALLATION FOR A 2STOP ELEVATOR |              |                           |          |
|   |          |          |            | Designed by<br>RL                              | Scale<br>NTS | Drawing No.<br>D-TYP-H-02 | Rev<br>2 |
|   |          |          |            | Date   | 11/22/2019   |                           |          |